

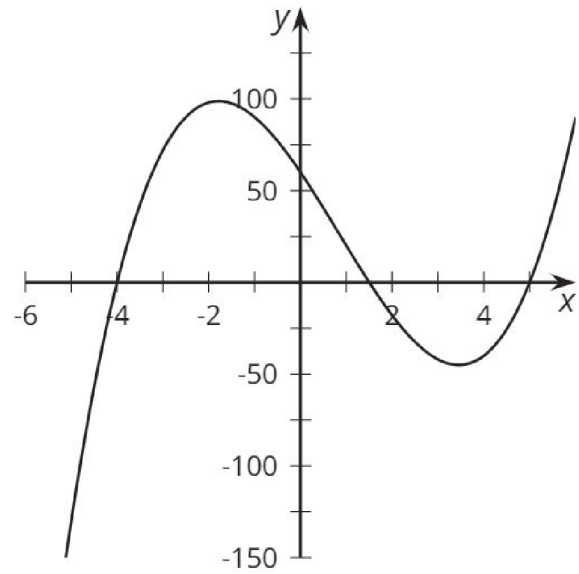
Factors, Intercepts, and Graphs

## Card A

$$y = (x - 5)(x - 4)(2x + 3)$$

Factors, Intercepts, and Graphs

## Card 1



Factors, Intercepts, and Graphs

## Card B

$$y = (x + 5)(x + 4)(2x - 3)$$

Factors, Intercepts, and Graphs

## Card 2

A graph with  $x$ -intercepts at 5,  
 $\frac{3}{2}$ ,  
-4, and  $-\frac{3}{2}$ .

Factors, Intercepts, and Graphs

## Card C

$$y = (x - 5)(x + 4)(2x + 3)$$

Factors, Intercepts, and Graphs

## Card 3

A graph with only positive  $x$ -intercepts.

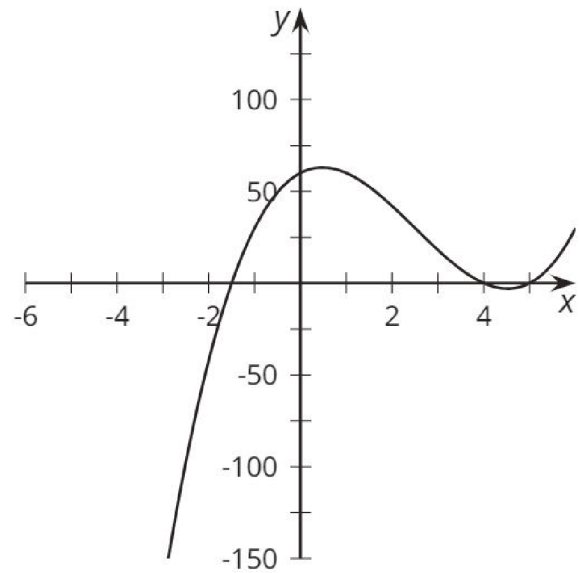
Factors, Intercepts, and Graphs

## Card D

$$y = (x + 5)(x - 4)(2x + 3)$$

Factors, Intercepts, and Graphs

## Card 4



Factors, Intercepts, and Graphs

## Card E

$$y = (x - 5)(x - 4)(2x - 3)$$

Factors, Intercepts, and Graphs

## Card 5

A graph with only negative  $x$ -intercepts.

Factors, Intercepts, and Graphs

## Card F

$$y = (x + 5)(x + 4)(2x + 3)$$

Factors, Intercepts, and Graphs

## Card 6

A graph with  $x$ -intercepts at -5,  
-4, and  $\frac{3}{2}$ .

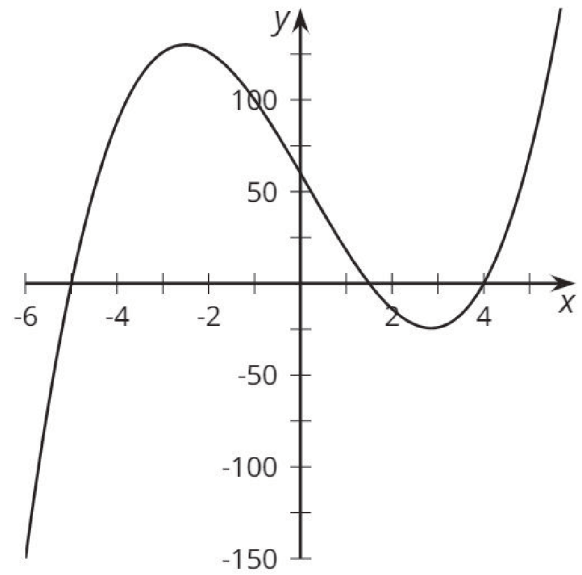
Factors, Intercepts, and Graphs

## Card G

$$y = (x - 5)(x + 4)(2x - 3)$$

Factors, Intercepts, and Graphs

## Card 7



Factors, Intercepts, and Graphs

## Card H

$$y = (x + 5)(x - 4)(2x - 3)$$

Factors, Intercepts, and Graphs

## Card 8

