



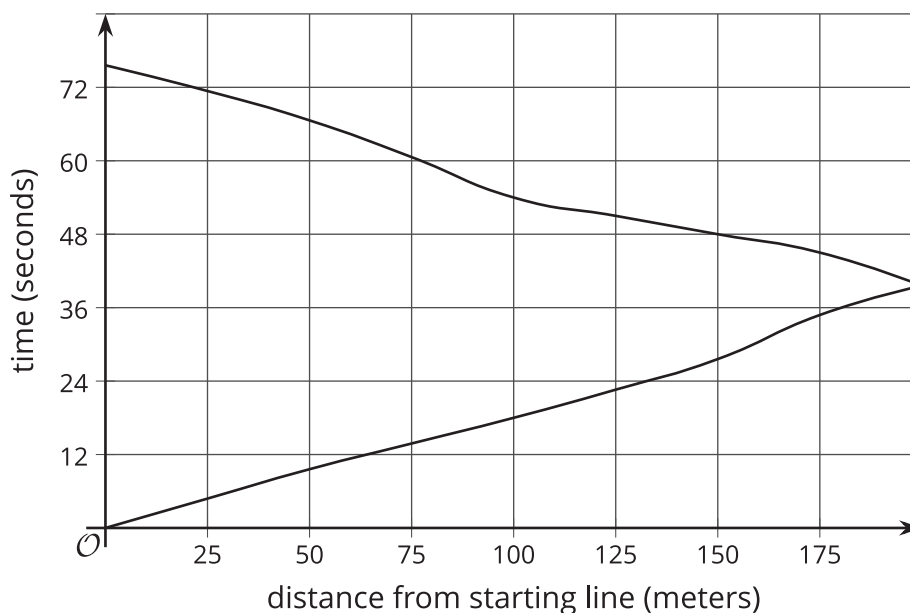
Tables, Equations, and Graphs of Functions

Let's connect equations and graphs of functions.

4.1

Notice and Wonder: Doubling Back

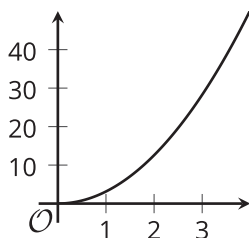
What do you notice? What do you wonder?



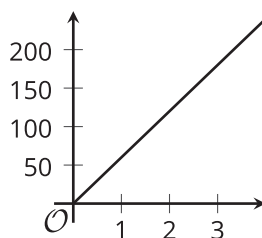
4.2 Equations and Graphs of Functions

The graphs of three functions are shown.

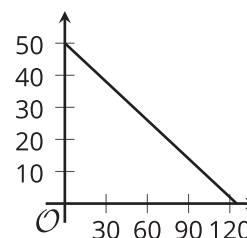
A



B



C



- Match one of these equations to each of the graphs.
 - $d = 60t$, where d is the distance in miles that someone would travel in t hours if they drove at 60 miles per hour.
 - $q = 50 - 0.4d$, where q is the number of quarters and d is the number of dimes in a pile of coins worth \$12.50.
 - $A = \pi r^2$, where A is the area in square centimeters of a circle with radius r centimeters.
- Label each of the axes with the independent and dependent variables and the quantities they represent.
- For each function, answer the following: What is the output when the input is 1? What does this tell you about the situation? Label the corresponding point on the graph.
- Find two more input-output pairs. What do they tell you about the situation? Label the corresponding points on the graph.

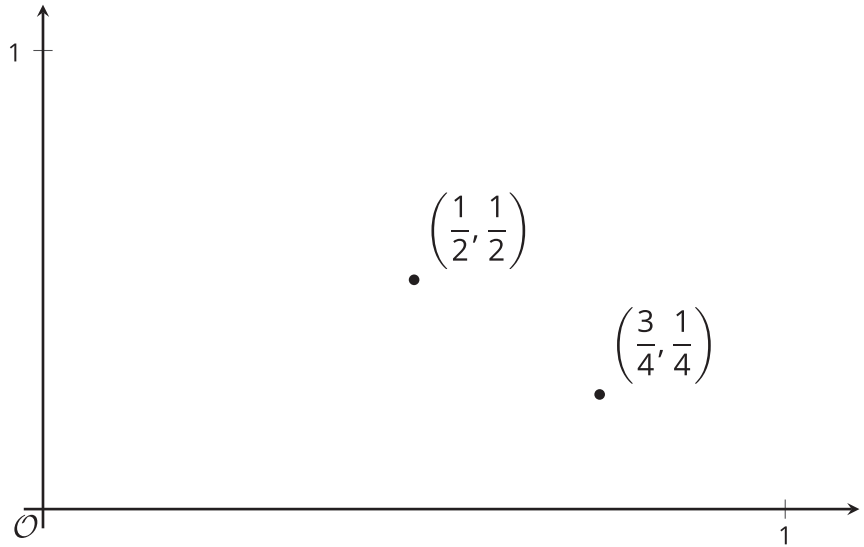


Are you ready for more?

A function has allowable inputs of fractions $\frac{a}{b}$ between 0 and 1 where a and b have no common factors, and it outputs the fraction $\frac{1}{b}$. For example, given the input $\frac{3}{4}$, the function outputs $\frac{1}{4}$, and given the input $\frac{1}{2}$, the function outputs $\frac{1}{2}$. These two input-output pairs are shown on the graph.

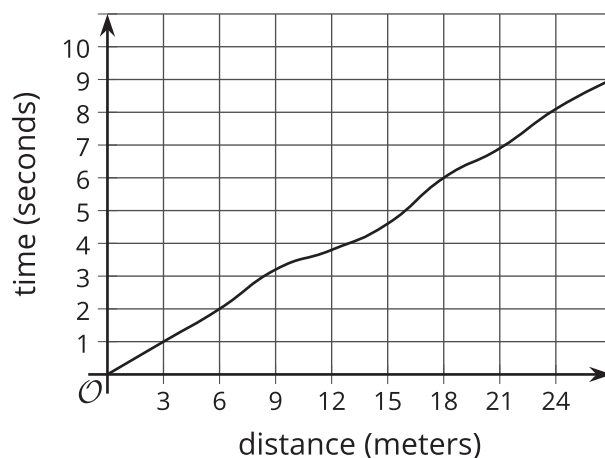
Plot at least 10 more points on the graph of this function.

Are most points on the graph above or below a height of 0.3? Of height 0.01?



4.3 Running around a Track

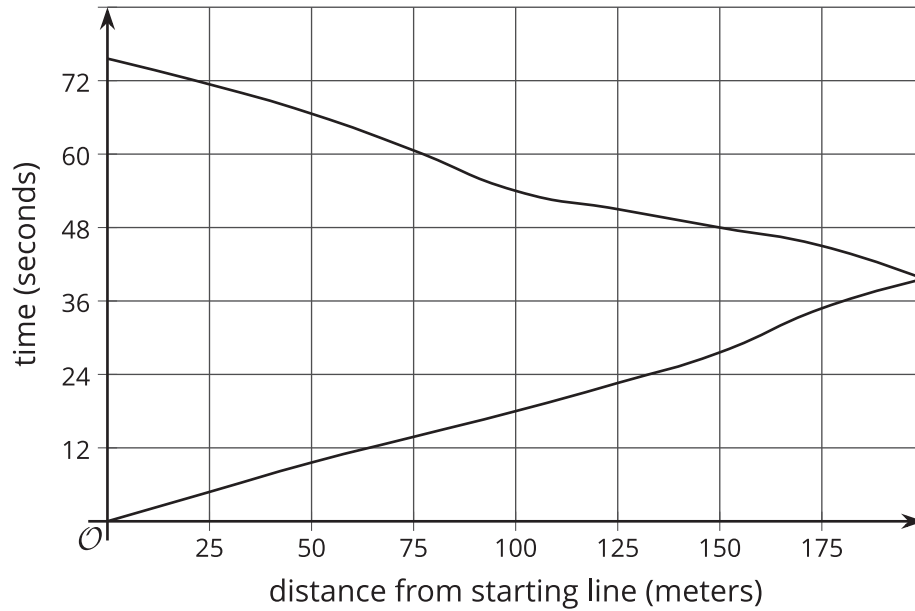
1. Kiran was running around the track. The graph shows the time, t , he took to run various distances, d . The table shows his time in seconds after every three meters.



d	0	3	6	9	12	15	18	21	24	27
t	0	1.0	2.0	3.2	3.8	4.6	6.0	6.9	8.09	9.0

- How long did it take Kiran to run 6 meters?
- How far had he gone after 6 seconds?
- Estimate when he had run 19.5 meters.
- Estimate how far he ran in 4 seconds.
- Is Kiran's time a function of the distance he has run? Explain how you know.

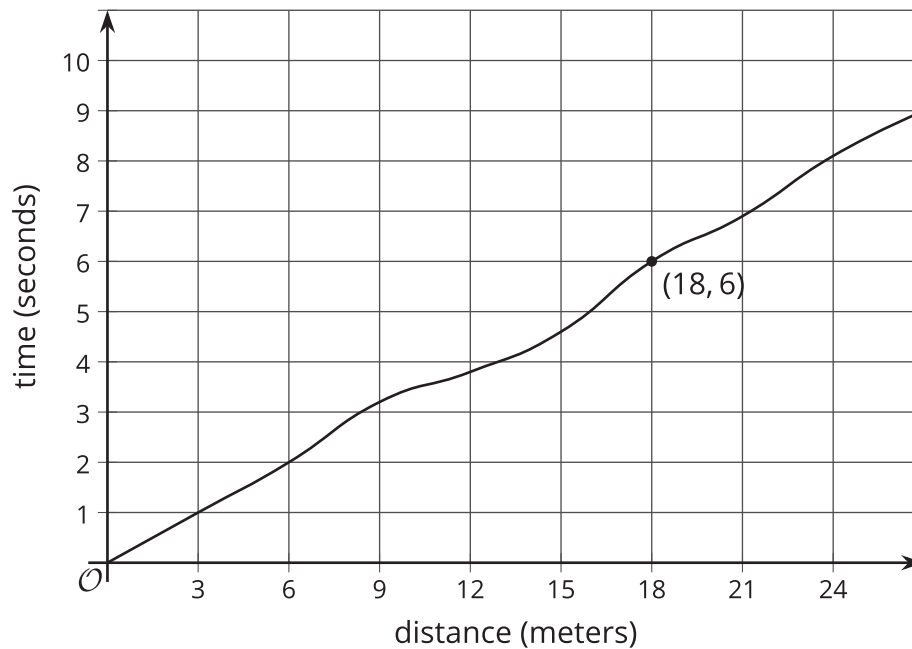
2. Priya is running once around the track. The graph shows her time given how far she is from her starting point.



- What was her farthest distance from the starting line?
- Estimate how long it took her to run around the track.
- Estimate when she was 100 meters from the starting line.
- Estimate how far she was from the starting line after 60 seconds.
- Is Priya's time a function of her distance from her starting point? Explain how you know.

Lesson 4 Summary

Here is the graph showing Noah's run.



The time in seconds since he started running is a function of the distance he has run. The point $(18, 6)$ on the graph tells us that the time it takes him to run 18 meters is 6 seconds. The input is 18 and the output is 6.

The graph of a function is all the coordinate pairs, (input, output), plotted in the coordinate plane. By convention, we always put the input first, which means that the inputs are represented on the horizontal axis, and the outputs are represented on the vertical axis.