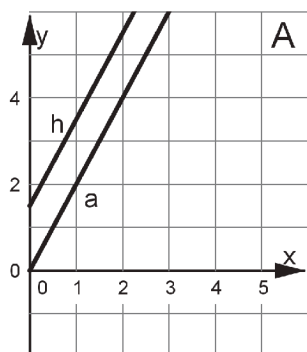


Translating a Line

Graph



Translating a Line

Table

x	y
0	1.5
1	3.5
1.5	4.5
2.75	7

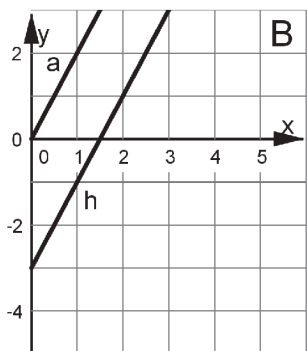
Translating a Line

Equation

$$y = \frac{3}{2} + 2x$$

Translating a Line

Graph



Translating a Line

Description

The y-coordinate is three less than double the x-coordinate.

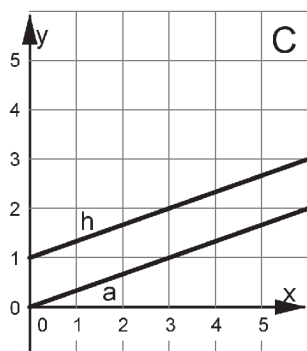
Translating a Line

Equation

$$2x - 3 = y$$

Translating a Line

Graph



Translating a Line

Description

The y-coordinate is one more than a third of the x-coordinate.

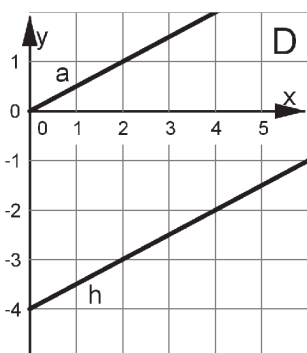
Translating a Line

Equation

$$y = \frac{1}{3}x + 1$$

Translating a Line

Graph



Translating a Line

Table

x	y
0	-4
2	-3
4	-2
8	0

Translating a Line

Equation