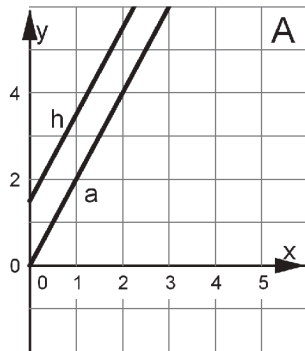
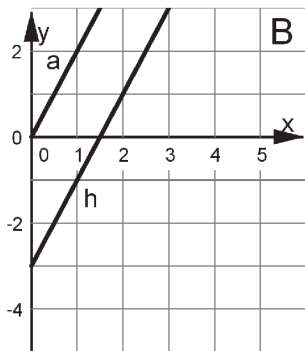


Translating a Line  
GraphTranslating a Line  
Table

$x$	$y$
0	1.5
1	3.5
1.5	4.5
2.75	7

Translating a Line  
Equation

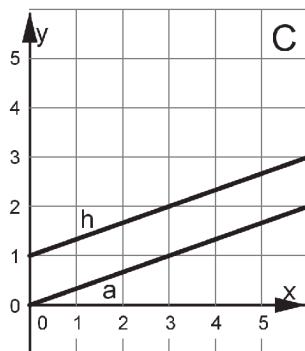
$$y = \frac{3}{2} + 2x$$

Translating a Line  
GraphTranslating a Line  
Description

The  $y$ -coordinate is three less than double the  $x$ -coordinate.

Translating a Line  
Equation

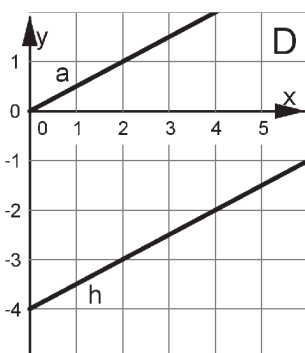
$$2x - 3 = y$$

Translating a Line  
GraphTranslating a Line  
Description

The  $y$ -coordinate is one more than a third of the  $x$ -coordinate.

Translating a Line  
Equation

$$y = \frac{1}{3}x + 1$$

Translating a Line  
GraphTranslating a Line  
Table

$x$	$y$
0	-4
2	-3
4	-2
8	0

Translating a Line  
Equation