



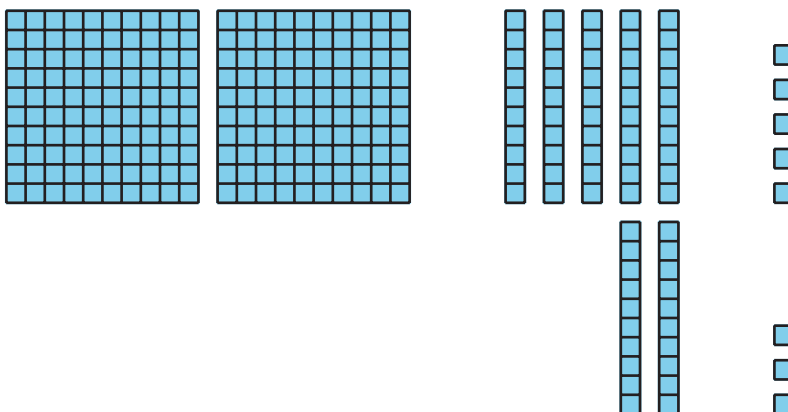
# Compose Tens and Hundreds to Add

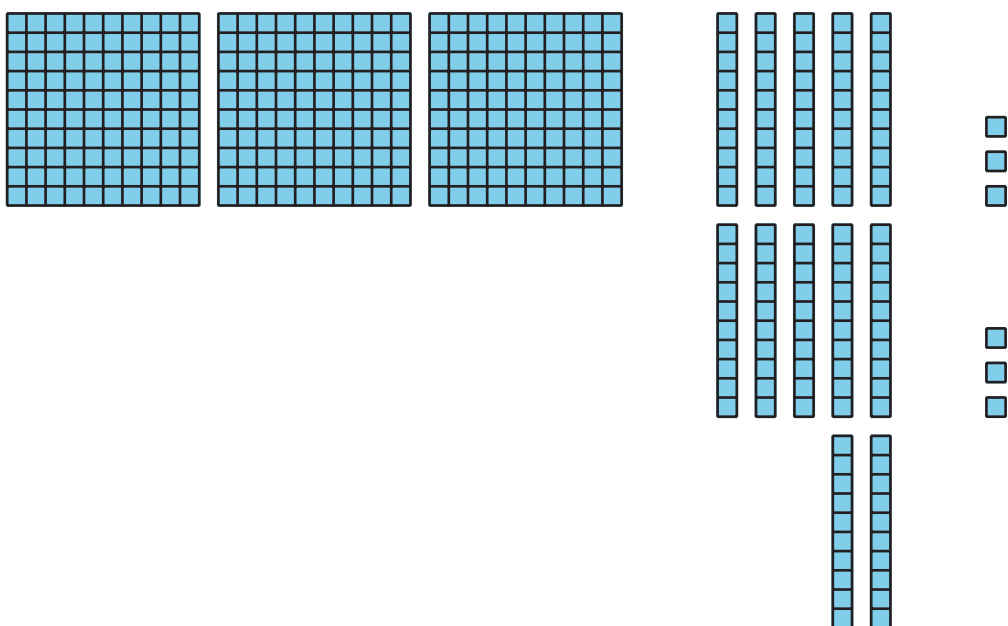
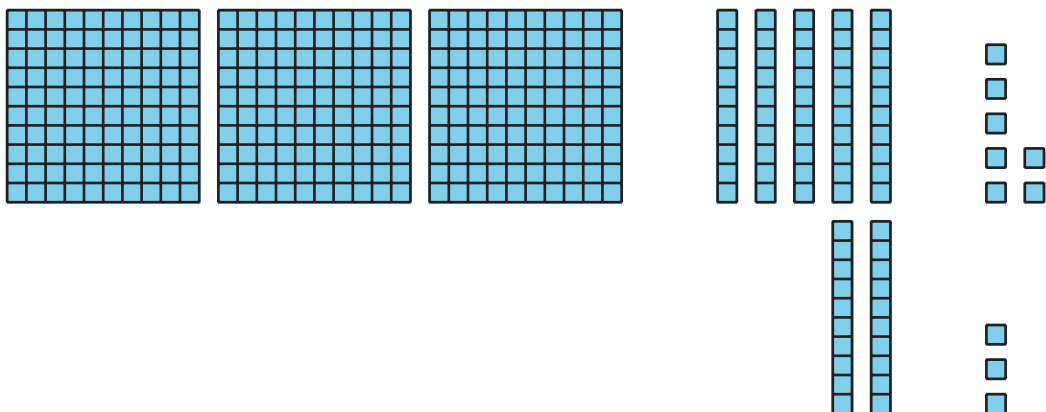
Let's compose tens and hundreds to add.

## Warm-up

### How Many Do You See: Too Many Tens

How many do you see? How do you see them?





## Activity 1

### Compare the Sums

Find the value of each sum. Show your thinking, using objects, drawings, numbers, or words.

1.  $273 + 18$

2.  $273 + 81$



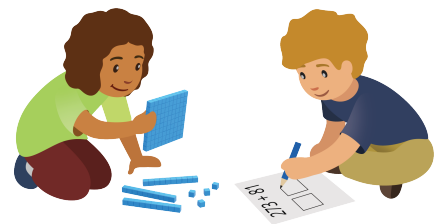
3.  $273 + 88$

4. How are the sums alike? How are they different?

---

---

---

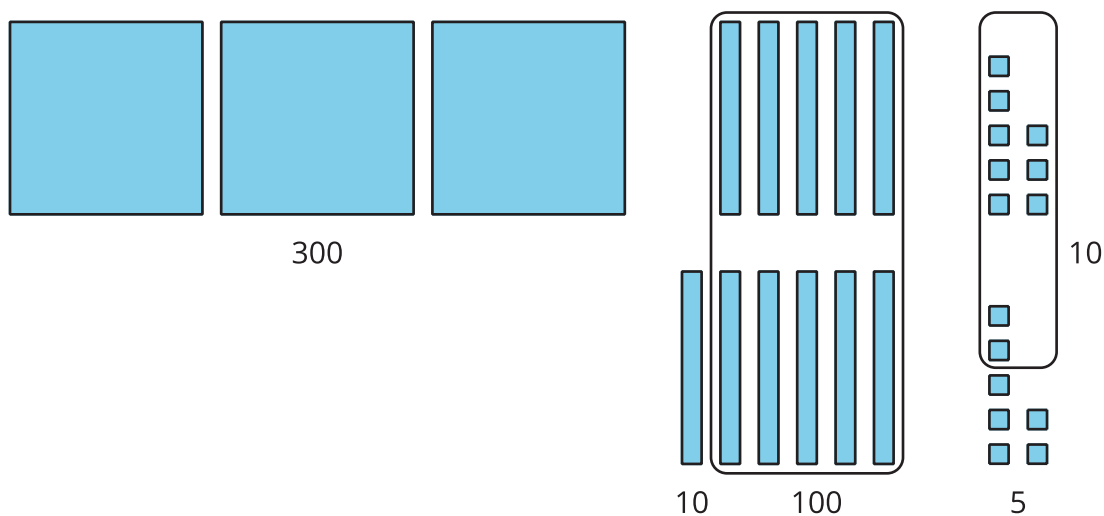


## Activity 2

### Different Ways to Show Your Thinking

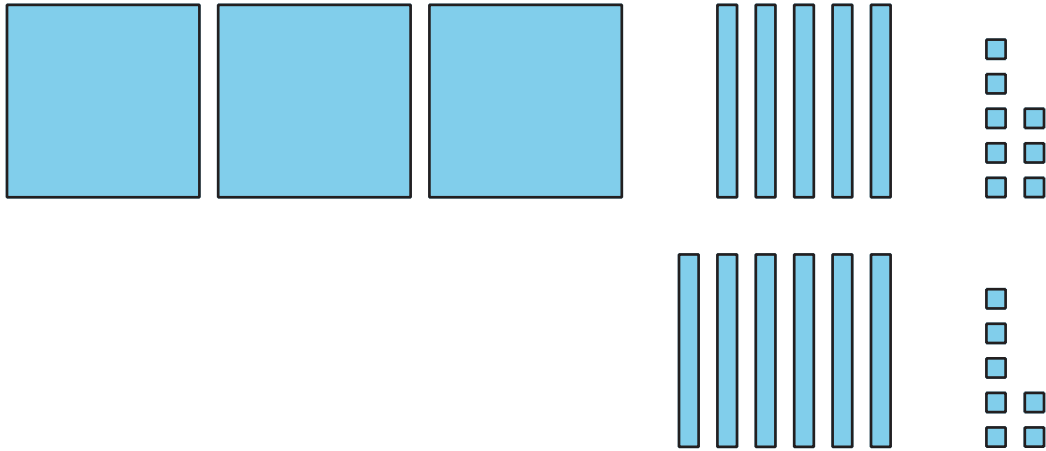
1. Priya and Lin find the value of  $358 + 67$ .

Priya's work



$$\begin{aligned} 300 + 100 + 10 + 10 + 5 \\ 400 + 20 + 5 = 425 \end{aligned}$$

Lin's work



3 hundreds + 11 tens + 15 ones  
11 tens = 110  
15 ones = 15  
 $300 + 110 + 15 = 425$

How are Priya's and Lin's work alike? How are they different?  
Explain your reasoning.

---

---

---

2. Find the value of  $546 + 86$ .

Show your thinking, using objects, drawings, numbers, or words.

