



# Creating Scale Drawings

Let's create our own scale drawings.

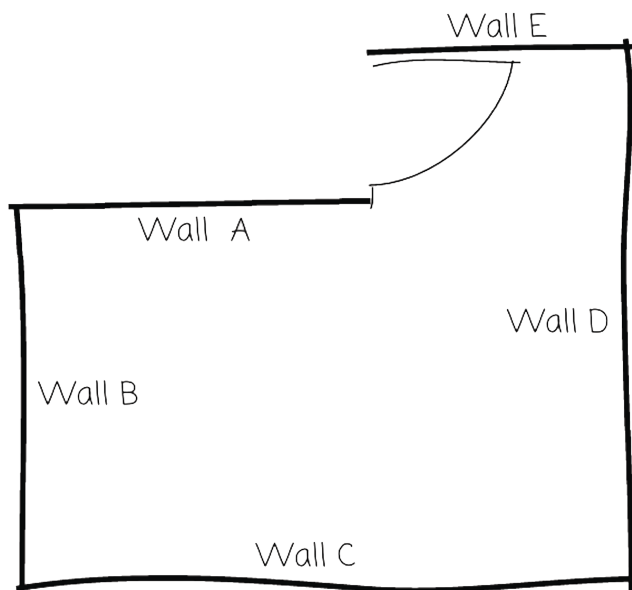
## 9.1 Math Talk: More Unit Fractions

Find the value of each expression mentally.

- $\frac{1}{3} \cdot 15$
- $15 \cdot \frac{1}{4}$
- $(2.6) \cdot \frac{1}{2}$
- $\frac{1}{5} \cdot (8.5)$

## 9.2 Bedroom Floor Plan

Here is a rough sketch of Noah's bedroom (not a scale drawing).





Noah wants to create a floor plan that is a scale drawing.

1. The actual length of Wall C is 4 m. To represent Wall C, Noah draws a segment 16 cm long. What scale is he using? Explain or show your reasoning.
2. Find another way to express the scale.
3. Discuss your thinking with your partner. How do your scales compare?
4. The actual lengths of Wall A and Wall D are 2.5 m and 3.75 m. Determine how long these walls will be on Noah's scale floor plan. Explain or show your reasoning.



### Are you ready for more?

If Noah wanted to draw another floor plan on which Wall C was 20 cm, would 1 cm to 5 m be the right scale to use? Explain your reasoning.





## 9.3

# Two Maps of Utah

A rectangle around Utah is about 270 mi wide and about 350 mi tall. The upper right corner that is missing is about 110 mi wide and about 70 mi tall.

1. Make a scale drawing of Utah where 1 centimeter represents 50 mi.

Make a scale drawing of Utah where 1 centimeter represents 75 mi.

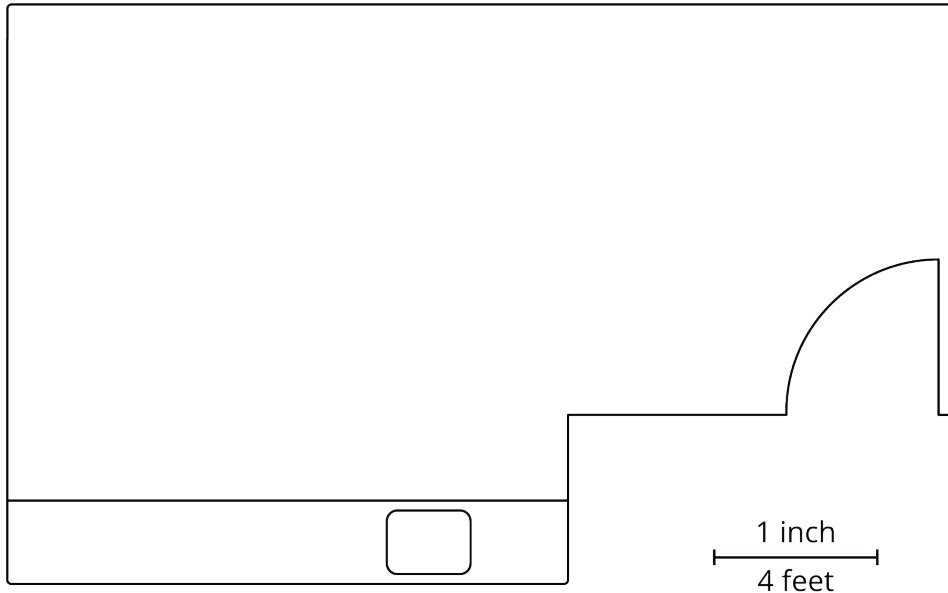
2. How do the two drawings compare? How does the choice of scale influence the drawing?





## Lesson 9 Summary

If we want to create a scale drawing of a room's floor plan that has the scale "1 inch to 4 feet," we can divide the actual lengths in the room (in feet) by 4 to find the corresponding lengths (in inches) for our drawing.



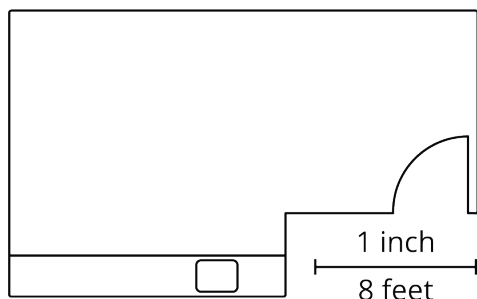
Suppose the longest wall is 23 feet long. We should draw a line 5.75 inches long to represent this wall, because  $23 \div 4 = 5.75$ .

There is more than one way to express this scale. These three scales are all equivalent, because they represent the same relationship between lengths on a drawing and actual lengths:

- 1 inch to 4 feet
- $\frac{1}{2}$  inch to 2 feet
- $\frac{1}{4}$  inch to 1 foot

Any of these scales can be used to find actual lengths and scaled lengths (lengths on a drawing). For instance, we can tell that, at this scale, an 8-foot long wall should be 2 inches long on the drawing because  $\frac{1}{4} \cdot 8 = 2$ .

The size of a scale drawing is influenced by the choice of scale. For example, here is another scale drawing of the same room using the scale 1 inch to 8 feet.



Notice that this drawing is smaller than the previous one. Since one inch on this drawing represents twice as much actual distance, each side length needs to be only half as long as it was in the first scale drawing.