

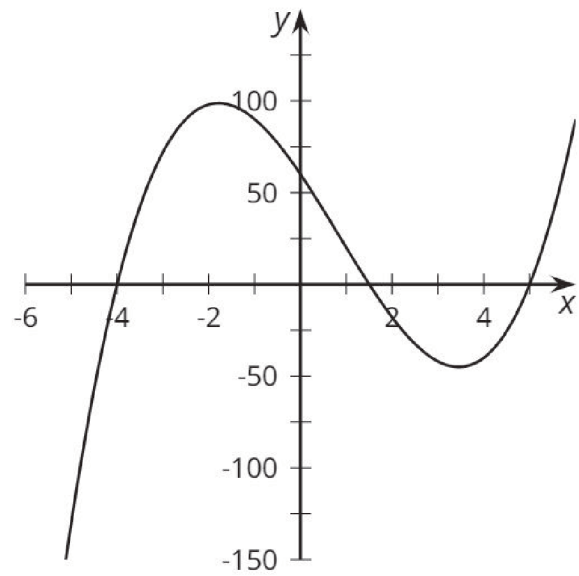
Factors, Intercepts, and Graphs

Card A

$$y = (x - 5)(x - 4)(2x + 3)$$

Factors, Intercepts, and Graphs

Card 1



Factors, Intercepts, and Graphs

Card B

$$y = (x + 5)(x + 4)(2x - 3)$$

Factors, Intercepts, and Graphs

Card 2

A graph with x -intercepts at 5,
 $\frac{3}{2}$,
-4, and $-\frac{3}{2}$.

Factors, Intercepts, and Graphs

Card C

$$y = (x - 5)(x + 4)(2x + 3)$$

Factors, Intercepts, and Graphs

Card 3

A graph with only positive x -intercepts.

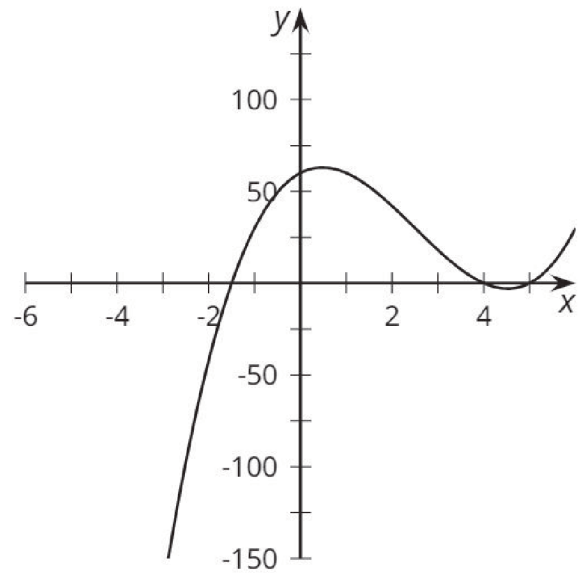
Factors, Intercepts, and Graphs

Card D

$$y = (x + 5)(x - 4)(2x + 3)$$

Factors, Intercepts, and Graphs

Card 4



Factors, Intercepts, and Graphs

Card E

$$y = (x - 5)(x - 4)(2x - 3)$$

Factors, Intercepts, and Graphs

Card 5

A graph with only negative x -intercepts.

Factors, Intercepts, and Graphs

Card F

$$y = (x + 5)(x + 4)(2x + 3)$$

Factors, Intercepts, and Graphs

Card 6

A graph with x -intercepts at -5,
-4, and $\frac{3}{2}$.

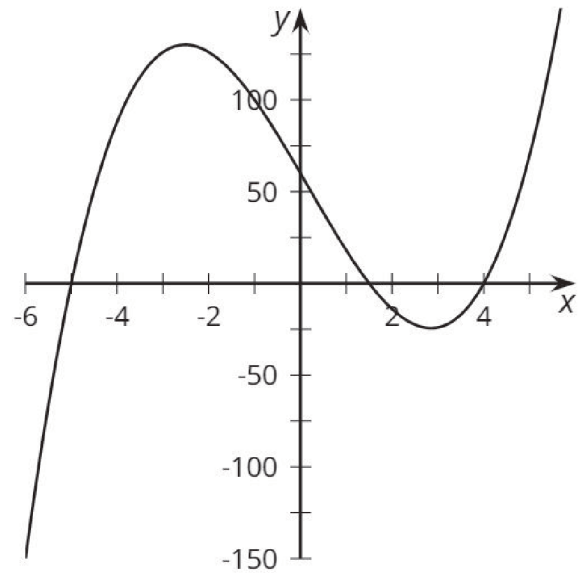
Factors, Intercepts, and Graphs

Card G

$$y = (x - 5)(x + 4)(2x - 3)$$

Factors, Intercepts, and Graphs

Card 7



Factors, Intercepts, and Graphs

Card H

$$y = (x + 5)(x - 4)(2x - 3)$$

Factors, Intercepts, and Graphs

Card 8

