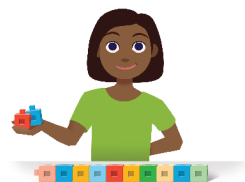


## Directions:

- Start with a tower of 10 cubes.
- Partner A: Put the tower behind your back. Break off some cubes. Show your partner the rest of the tower.
- Partner B: Record an addition equation with a blank to represent the number of hidden cubes.
- Partner A: Ask, "How many are behind my back? How do you know?"
- Partner B: Record the answer to complete the equation.
- Switch roles and repeat.



$$\square + \square = \square$$

$$\square + \square = \square$$

$$\square + \square = \square$$

$$\square + \square = \square$$

$$\square + \square = \square$$

$$\square + \square = \square$$

$$\square + \square = \square$$

$$\square + \square = \square$$

$$\square + \square = \square$$

$$\square + \square = \square$$