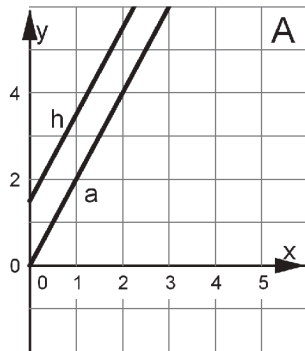
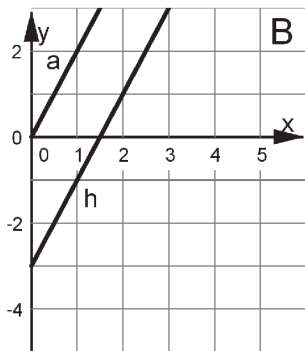


Translating a Line
GraphTranslating a Line
Table

x	y
0	1.5
1	3.5
1.5	4.5
2.75	7

Translating a Line
Equation

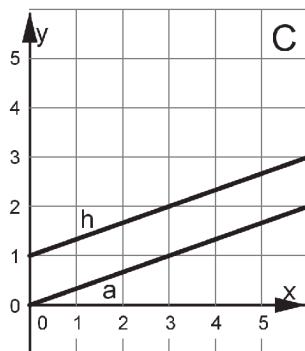
$$y = \frac{3}{2} + 2x$$

Translating a Line
GraphTranslating a Line
Description

The y -coordinate is three less than double the x -coordinate.

Translating a Line
Equation

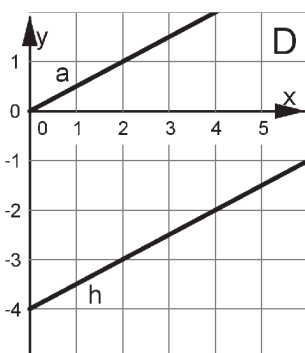
$$2x - 3 = y$$

Translating a Line
GraphTranslating a Line
Description

The y -coordinate is one more than a third of the x -coordinate.

Translating a Line
Equation

$$y = \frac{1}{3}x + 1$$

Translating a Line
GraphTranslating a Line
Table

x	y
0	-4
2	-3
4	-2
8	0

Translating a Line
Equation