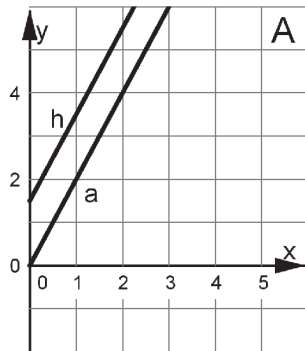


Translating a Line, Spanish

Gráfica



Translating a Line, Spanish

Tabla

$x$	$y$
0	1.5
1	3.5
1.5	4.5
2.75	7

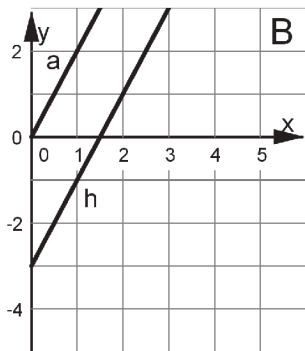
Translating a Line, Spanish

Ecuación

$$y = \frac{3}{2} + 2x$$

Translating a Line, Spanish

Gráfica



Translating a Line, Spanish

Descripción

La coordenada  $y$  es tres menos que dos veces la coordenada  $x$ .

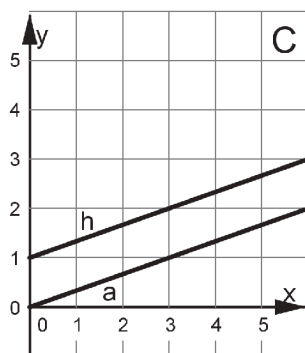
Translating a Line, Spanish

Ecuación

$$2x - 3 = y$$

Translating a Line, Spanish

Gráfica



Translating a Line, Spanish

Descripción

La coordenada  $y$  es uno más que un tercio de la coordenada  $x$ .

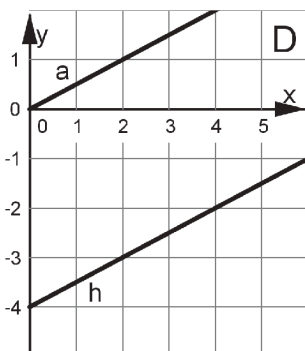
Translating a Line, Spanish

Ecuación

$$y = \frac{1}{3}x + 1$$

Translating a Line, Spanish

Gráfica



Translating a Line, Spanish

Tabla

$x$	$y$
0	-4
2	-3
4	-2
8	0

Translating a Line, Spanish

Ecuación